



Newsletter - Week 4 Term 1

Friday 28th February 2020

Principal's Message

Ngā mihi nui ki a koutou.

Our tamariki amaze me every day with their determination, persistence and 'can do' attitudes. As we head into next week's swimming sports I am motivated by their desire to do their very best. Recently I have been motivated to set my own personal fitness goal and have taken inspiration from our students. I stumbled upon the following quote whilst listening to a podcast on my way to work and thought this had great relevance to our students and community:

"Achievement and determination doesn't always earn a spot on the podium, but it's just as admirable, no matter where you are in the field." *Eugene Bingham*

As in every story there are two sides. In sports we celebrate those that stand on the podium, but equally so, we should celebrate the stories from the opposite end. Those who push themselves to do their very best and achieve their utmost, regardless of their sporting ability. For some of our students just getting in the water is a huge achievement, for some getting their head under is an incredibly scary thing. The wonderful thing with our students however is that they feel safe, secure and supported to achieve their personal best. I know they will all do their very best next week and look forward to celebrating all their achievements with our Pukehou community.

As always if you would like to discuss anything in relation to your child's education please do not hesitate to contact their classroom teacher or myself.

Nga mihi

Chris Birch
Principal

Bus Operational Changes

We are sorry to inform you that we are undergoing a driver change for the Pukehou School Bus. Sadly Deb is no longer able to continue with this role. We thank Deb for all her efforts with the bus and wish her all the very best for the future.

We will be operating on a skeleton staff of our backup parents and staff until next Wednesday when Ross Hatfull will take over the driving responsibilities. We welcome Ross to the role and our Pukehou community.

Save the date:

The wonderful Pukehou Easter Egg Hunt will once again take place in 2020. This will occur on Saturday 4th April. More information on ticket sales and the event itself will come out in the next week or so.

New Sand Kitchen

Mr Birch spent some time during the holidays building a unit for the children's sand kitchen, it is fantastic! If you have any metal bowls, pots or good quality utensils (we don't want them to break!) that you could donate, the children would be very grateful.

SWIM-A-THON Sunday 8th March at the AW Parsons Indoor Pool. Yay! We raised \$180 towards sponsorship today - thank you to everyone who contributed. Any additional donations and sponsorship for our team can be sent to the school office next week. A couple of individual students have taken up the challenge also, well done. Can you get a business team together for next week?

Waipawa Museum - Richard Moorhead's Art Exhibition opens on Friday 6 March. Richard is a well known local artist, he grew up in Tikokino and has painted many CHB and HB scenes in watercolour/acrylic. This exhibition is to celebrate his 80th birthday.



Congratulations to Kaito who has been selected to participate in the 2020 CHB Sports Academy.

HELP!

Our awesome Year 6 Eco Warriors need horse or sheep poo to boost our vege gardens as well as clean preserving jars and sealing rings to preserve the abundance of fruit we had on the fruit trees in 2020. If you can help please drop jars to the office and bags of poo by the vege gardens.

Thank you!

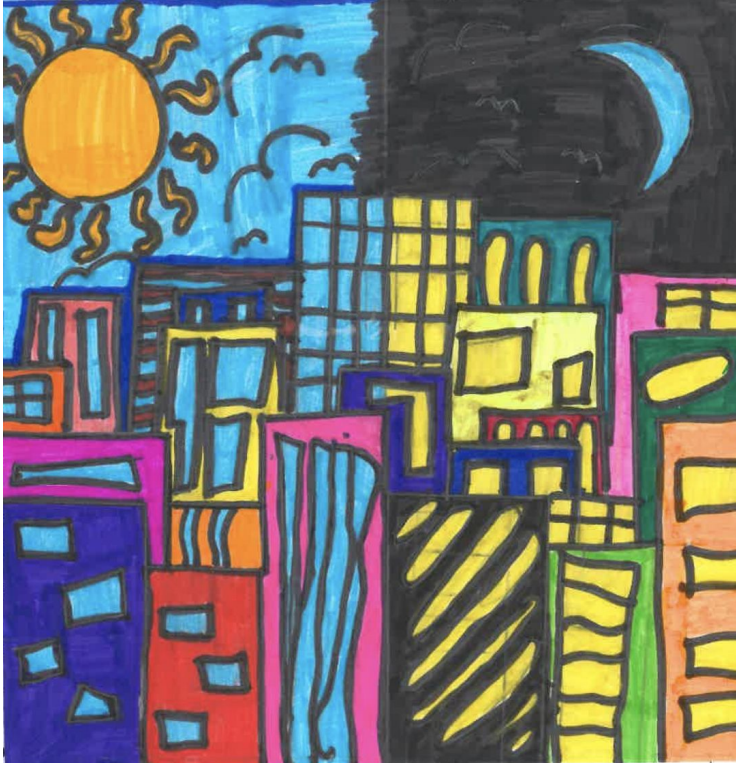
Kotare artwork Inspired by James Rizzi



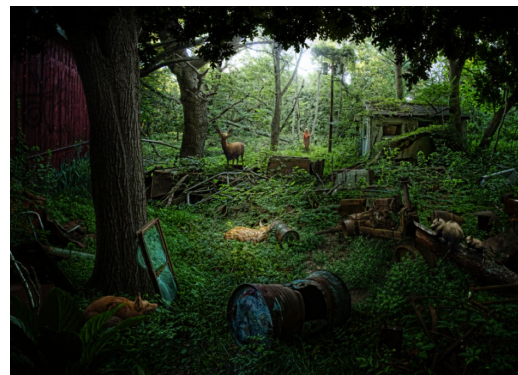
Artwork by Liam



Artwork by Emily



Artwork by Zoe



Kotare were asked to write a short piece based on the photograph (left). Take a look at Livvy's efforts.

The Dark Part of Town

The overgrown abandoned town that animals call home. There's no road or signs, so which path should I choose? Big trees all over the land. Grass & ivy cover the ground like a big blanket. Broken down cars blocking my way and sharp glass on the ground. The trees make a rustling sound.

By Livvy Age : 9 Years



In 2020 our Year 6 students are leading the EnviroSchools journey. Each fortnight they are working with Sonia and AK on projects around the school. They then share their journey with the other classes and year groups, teaching them through whanaungatanga (relationships). Last week it was Kea's turn to help plant new seedlings in the gardens and clean up the peace path. Above are pictures of the crew redefining the pathway and dusting off the embedded pavers. Below are some of the treasures found in the gardens during the planting exercise.



<u>House Points:</u>	Pukeiti	Pukenui	Kauhehei	Kahuranaki
<u>2 week totals</u>	6,300	6,395	<u>7,295</u>	5,230
<u>Term Totals</u>	9,500	<u>13,735</u>	12,245	10,180

Riverside Perennials

We propagate and grow all our own plants including Herbs, Shrubs, Old Fashioned Perennials and Natives.

Contact Linda and Adam

144 Mt Herbert Rd Waipukurau

027 7150248 / 06 8585028

Or find us on Facebook