



Newsletter

Wisdom begins with Wonder



Term 2, Week 12

End of Term 2

July 3rd, 2020

Principal's Message

Ngā mihi nui ki a koutou.

As the term rolls to an end, I would like to extend a huge thank you to everyone who is involved in Team Pukehou. Students, whanau and staff. Together we have braved the storm of COVID-19, kept calm during what has been a challenging time in New Zealand and the history of the world, and have ensured that our tamariki are happy and safe. You have all played a massive role in this. We as a staff thank you for the tremendous support you have all given, reassuring your children in what has been a challenging time. We look forward to Term Three, where once again we expect to see things return more to normal. We are excited to be hosting Poukawa and some Otane students for our annual cross country as well as the resumption of the weekend and after school sports activities. Slowly too, across school events are resuming which is an exciting step in our local recovery.

Term Two has been an interesting journey. Take the break to reconnect with your child/ren and enjoy their company. If you are travelling, travel safely. We look forward to reconnecting with you all early in Term Three.

Noho ora mai

Chris Birch

Principal

principal@pukehou.school.nz

Pukehou Bus Group

Recently the Pukehou Bus Group sought the expertise of the New Zealand Police Education and Roding teams to assist in reviewing our Waipawa bus stop. The result of this review was that our current stop location is the best and safest stop for students and staff. The recommendation, however, was made that no students (or whanau) should use the pedestrian crossing opposite the clocktower, rather all students have been directed to use the crossing directly adjacent to the Museum. We have spoken to the students about this and intend on taking them to Waipawa early in Term 3 to practise crossing this busy road with the support of Constable Che Lind, NZ Police. We request that all families who use this stop reinforce this message with their children and make time during the holiday period to practise crossing SH2 using the Museum crossing. We have also been in contact with the CHB District Council who are reviewing the layout of these crossings in light of the accident earlier in the term. We hope, with the advice that has been shared with them as part of our review, they will make significant changes to the safety of pedestrians and vehicles in the coming months.



(06) 856 8169



174 State Highway 2, R.D.1 Otane



office@pukehou.school.nz



CENTRAL HAWKE'S BAY COLLEGE

Achieve with Honour

The **Central Hawke's Bay College OPEN EVENING** will be held on **Tuesday 11th August from 6.30pm.**

This event is open to the whole community to attend and see what the College has to offer.

The evening begins in the Hall with some brief presentations

followed by a tour of the school. Those present will get the opportunity to talk to staff and students about each Faculty and see what each area of the school provides for their students.

We particularly invite any prospective parents and students to attend so that they can see for themselves what makes Central Hawke's Bay College an award winning school.

If you have any questions at all, please do not hesitate to contact me on (06) 858 9203, or office@chbc.school.nz and I will be more than happy to help.

Kindest regards,

Emily White

Administration Executive

CHBC

Ph 06 858 9203

www.chbc.school.nz

HOLIDAY ART CLASSES STARTING SOON

BLOCK PRINTING

AT TATTERTALES

95 HIGH STREET WAIPAWA 10am - 11am

MONDAY – 6th July

WEDNESDAY – 8th July

FRIDAY – 10th July

SMALL GROUPS, \$25, TAKE HOME YOUR CREATIONS

RING DENISE 0212779091 TO BOOK IN

WE LOOK FORWARD TO SEEING YOU

HOLIDAY PROGRAMME:

Exciting stuff! This year I'll be running a 2 day performing arts holiday programme! these will be at the community rooms in Waipuk.

There will be 2 to choose from:

Monday 6th July - Tuesday 7th July:

10:30-3pm Cost \$65

All things Music - learn about singing, making music and lots of fun and games!

Monday 13th July - Tuesday 14th July:

10:30-3pm Cost \$65

All things Drama - learn about drama, stagecraft, fun and games.

Parents can contact me on this email, the All Stars Facebook page or by phone : 02102448517

Thank you for your time,
Alanna Barkle

alanna.chbarts@gmail.com

ALL STARS PERFORMING ARTS



TE AUTE COLLEGE

Te Aute College is holding an **Information Evening**

on **Monday 27 July 2020 at 6.00pm** at The Terrace School, Waipukurau.

See the attached a 30 second you tube link promoting the evening.

<https://www.youtube.com/watch?v=Atgl19qTVc0>

We look forward to meeting with students and whānau.

Ngā mihi nui ki a koe.

Shane Hiha, Principal P | 06 8568016

E | principal@teaute.school.nz W | www.teaute.maori.nz



Tots to Teens Winter issue OUT NOW 🐼 Ear, nose & throat / Brown rice / Sporty kids 🍌 Tots to Teens FREE digi-mag for all parents, through schools 📱 🖨️ Free for school newsletters 🚚 Link enclosed for our June/July/August issue 🐼

Our first issue post-lockdown! Here's your school community's link:

<https://issue2006nin.totstoteens.co.nz/>



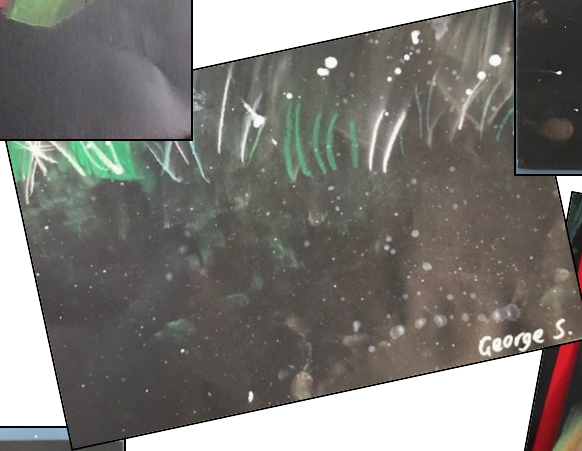
(06) 856 8169



174 State Highway 2, R.D.1 Otane

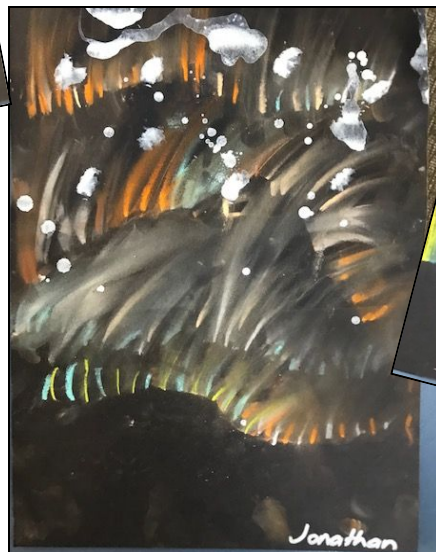
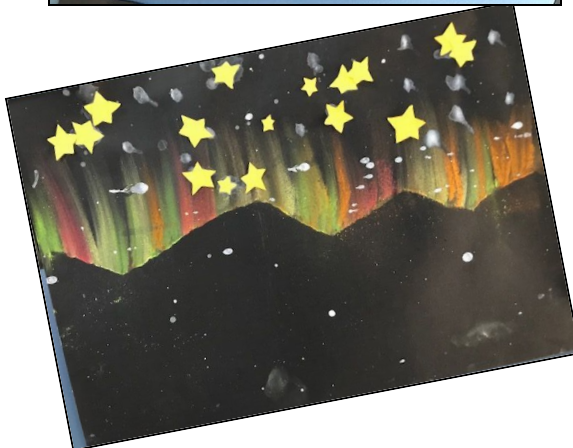


office@pukehou.school.nz



Matariki Stars and the Southern Lights

*Created by Kea &
Kereru students*



Reminder: The holidays are a good time to check the heads of your family for head lice and for the children to practice brushing and tying up long hair. We encourage long hair to be tied up at school to help keep the nits at bay.



The Hastings District Council are excited to be hosting Kahurangi Maori Dance Company with their performance of **Matariki** for families on Friday 17 July at 1.00pm. This performance will be a koha entry creating access for everyone.

Link to show: [Click Here](#)

Daniel Betty Kaiwhakahaere Ratonga Whakaari ā-Hapori - Presenter Services Community Manager

Phone (06) 871 5289 Mobile 027 263 7694 Email danielb@toitoivenues.co.nz Web toitoivenues.co.nz

Hastings District Council, Private Bag 9002, Hastings 4156, New Zealand



Are you missing anything? The amount of **'Lost Property'** at school is ridiculous!!

Anything left at the end of Week 1 next term will be given to charity.

House Points:	Pukeiti	Pukenui	Kauhehei	Kahuranaki
Week 11 & 12 Totals	9,885	7,100	9,960	7,000
Term Totals	26,749	21,234	27,219	19,455

Pukehou Calendar:

July 3: Term 2 ends

July 20: Term 3 begins

August 25: Cross Country at Pukehou School

Keep up with what is going on at school

We try to ensure everyone receives important messages regarding activities going on here at school. To do this we use a number of different platforms. These can be found below. Wherever possible I try to ensure messages are recorded on all platforms so nothing is missed.

Our main message relaying platforms: Are you in the LOOP?



Email

Please ensure we have yours!!!
office@pukehou.school.nz



Fortnightly Newsletters

Emailed to our contact lists.
If you would prefer a paper copy please let Jacqui know.
office@pukehou.school.nz



Seesaw

Class seesaw accounts.
Notices regarding individual classes.

Riverside Perennials

We propagate and grow all our own plants including Herbs, Shrubs, Old Fashioned Perennials and Natives.

Contact Linda and Adam
144 Mt Herbert Rd, Waipukurau
027 715 0248 / (06) 858 5028

Or find us on Facebook



(06) 856 8169



174 State Highway 2, R.D.1 Otane



office@pukehou.school.nz