



# Newsletter

Wisdom begins with Wonder



Term 1, Week 4

February 26 2021

## Principal's Message

☺  
Nga mihi nui ki a koutou.

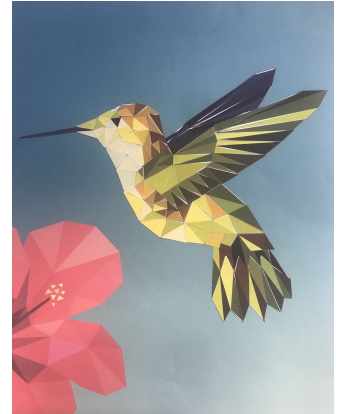
It has been lovely to see everyone at school over the last week, checking in with the staff at the parent - student goal-setting hui. Thank you for making the time to come in and discuss your child's learning, set goals and celebrate the wonderful start to the year they have all had.

If you were unable to attend for any reason, please contact your child's teacher and they will be happy to make an alternative time to meet with you.

Your child's education is a partnership between home and school. We would love to hear from you throughout the year if you have any questions or if you would just like to see what they are up to. Feel free to pop in to see any of the staff. Our doors are always open and we love celebrating your child's successes with you.

Nga mihi

Chris Birch



Sticker Art Creation - Toby M

**REMINDER: No children should be dropped off at school before 8:00am. We thank you for your support!**



PBG

PUKEHOU BUS GROUP

Our wonderful PBG are a dedicated group of parents who undertake the operation and running of the PBG business. Our bus receives no Ministry of Education funding, hence ongoing running costs must be covered by significant fundraising initiatives. Whether your child uses the bus for the daily

commute or not, we all benefit from Big Bill's existence. The PBG allows us to use Big Bill for all our school trips free of charge, covering the cost of fuel, drivers and operational costs through their sustained efforts in fundraising. I urge you all get in behind their fundraising efforts to ensure the continual operation of the bus.

You would have received a sweetcorn sales sheet last week. Please try to sell as much of this as possible and have it back to the office by **Monday 8th March**. The PBG are also selling firewood again. There is a Working Bee on Monday 1st March, if you are able to assist even for a short period of time we would greatly appreciate your support. Please email [principal@pukehou.school.nz](mailto:principal@pukehou.school.nz) for details of both events.

Please support this wonderful cause as we all benefit from its existence!

## Firewood: Can you help?

Our wonderful Pukehou Bus Group are once again chopping firewood for sale to assist with the running costs of the school bus. If you are able to assist on Monday 1st March or ringing up logs on a weekend, please let Chris know.

[principal@pukehou.school.nz](mailto:principal@pukehou.school.nz) We would greatly appreciate any assistance you can give.



(06) 856 8169



174 State Highway 2, R.D.1 Otane



[office@pukehou.school.nz](mailto:office@pukehou.school.nz)

**ATTENTION ALL RUGBY PLAYERS:**

"Interested in playing rugby this season?  
The rugby season will start in May 2021.  
Choose a club to join and register online.  
New players please register online at:  
[www.sporty.co.nz/chbjrc](http://www.sporty.co.nz/chbjrc)

Existing players will receive an email to register again.  
Your club weigh-in details will follow."

**Kiwi League Tag** - Week 7-10 in this term. Games will be played at Waipawa School, on a Thursday afternoon.

We have a volunteer Coach and Ref for Pukehou School, now we need a team!

Sign up in the office.

As this is an introduction to Kiwi League Tag, there will be no cost this term.

Everyone will be learning alongside each other - this is a fun competition and ages can be mixed.

Ideally we will have 10 players per team, with 8 on the field at a time.

Games - 25th March, 1st April, 8th April, 15th April.

Registrations close Monday 8 March.

For more information or to register your team/s please contact Trace Liddington: [traceliddington06@hotmail.com](mailto:traceliddington06@hotmail.com)

**Swimming Sports**

**Tuesday 2nd March - next week!**

It is very important that we know how your children are getting to Waipukurau.

A notice was sent home on Monday 22nd for your to fill in and return - thank you to those who have done this. Please return all other forms on Monday so we can finalise transport.

**Swim 4 Lives - Swim-a-thon 2021**

"A fun community fundraising event to support CHB children to grow their knowledge, confidence and abilities in deep water."

<http://www.sportyco.nz/chbswim4lives>

Events for all ages and abilities. Plenty of prizes and lots of fun!

**SPLASH** - FUN ACTIVITIES for Non-Lane Swimmers (Learners Pool)

**PADDLE** - NOVICE SWIMMERS All swimmers must be capable of swimming 25m, aided or unaided

**SWIM** - COMPETENT SWIMMERS Must be capable of swimming 25m unaided, for 10 minutes continuously.

**TEAM SPRINT CHALLENGE** - 25m relay swimming for 10 minutes, mixed teams, any age, up to 5 per team.

The **Pukehou Staff challenge** you to get some sponsorship and swim **on your own**, or **in a team** against them in the Team Sprint Challenge. Enter as friends, a family, a business .. This is all for a very good cause.

Sponsorship Forms available from the school office. If you aren't a swimmer you may wish to **sponsor us!**

House Points:	Pukeiti	Pukenui	Kauhehei	Kahuranaki
Week 3 & 4 totals	4,890	4,820	<b>4,940</b>	3,250
Term Totals	7,850	8,000	<b>8,300</b>	7,720

Please return the Confidential Information and EOTC permission forms that were sent home in Week 1. If you need another copy let Jacqui know. Thank you.



(06) 856 8169



174 State Highway 2, R.D.1 Otane



[office@pukehou.school.nz](mailto:office@pukehou.school.nz)





Congratulations **Lucy**, for being successful in your application to join the **2021 CHB Sports Academy**.

We look forward to watching you grow and learn as you participate in the variety of sports and events you will be exposed to this year. We wish you all the best and will support you however we can.

### THE OP SHOP WAIPAWA

SUMMER CLOTHING SALE FILL A BAG FOR \$5.00

WHERE: Behind Waipawa Library

WHEN: Tuesday to Friday 9.30am - 3.30pm until 19th March

Find us on facebook

Kia ora Whanau, just a couple of reminders as we settle into school again.

1. **Head lice**, these always seem to make a comeback once school goes back. Make sure you keep checking your tamariki's hair and act promptly if you find any. *Dimethicone* is the most effective treatment, it is a non-insecticide, so no resistance, is easy to use and very effective. It works by suffocating the lice. Otherwise the conditioner and comb method is very effective as well. Coat the hair in a cheap conditioner and comb with lice comb. This needs to be done twice a week until there is no lice seen as it won't kill the eggs.
2. Once teachers and students are all back in class again in close contact we start to see **colds and sore throats etc.** re-occur. Even though it is hard to have children at home when you also need to be at work, please consider other whanau and keep your sick children at home until they are well. This is especially important when we are still seeing random community cases of Covid.
3. If you or your whanau are experiencing any **Covid-like symptoms**, please call your G.P or health line. Again, I realise it is a hassle if you are asked to come in and get a swab, but as with all public health issues, it takes a whole community (or country) to keep us all safe. We need to look after ourselves as well as those around us.

Nga mihi, Lou Macklow (Public Health Nurse)



At **JUNO Investing magazine**, we feel that many Kiwis missed out on financial education at school. That's why our goal is to educate Kiwis about their investment options to help them get ahead – and we believe this starts with the new generation.

Check out this FREE link to the latest issue. Enjoy the magazine, and share it with friends & family.

[https://issuu.com/junoinvesting/docs/juno\\_autumn\\_2021\\_-\\_invest\\_for\\_your\\_age?fr=sYzliZjMxMjIwMDU](https://issuu.com/junoinvesting/docs/juno_autumn_2021_-_invest_for_your_age?fr=sYzliZjMxMjIwMDU)

### Keep up with what is going on at school

We try to ensure everyone receives important messages regarding activities going on here at school. To do this we use a number of different platforms. These can be found below. Wherever possible I try to ensure messages are recorded on all platforms so nothing is missed.

#### Our main message relaying platforms: Are you in the LOOP?



##### Email

Please ensure we have yours!!!  
[office@pukehou.school.nz](mailto:office@pukehou.school.nz)



##### Fortnightly Newsletters

Emailed to our contact lists.  
If you would prefer a paper copy please let Jacqui know.  
[office@pukehou.school.nz](mailto:office@pukehou.school.nz)



##### Seesaw

Class seesaw accounts.  
Notices regarding individual classes.



(06) 856 8169



174 State Highway 2, R.D.1 Otane



[office@pukehou.school.nz](mailto:office@pukehou.school.nz)

# TE AUTE COLLEGE

# GALA

SATURDAY 6 MARCH 2021

9.30 karakia  
9.45 house relay  
10.00 stalls open  
1.15 kapa haka

*Nau mai e te katoa*



Fundraising for House Gazebos



100 SHW2 PUKEHOU

**Mō ngā tamariki te take!**  
All for tamariki!

**Children's Day**  
Sunday 7 March 2021  
10am - 1pm  
Russell Park, Waipukurau

For more information visit  
[www.childrensday.org.nz/find-events](http://www.childrensday.org.nz/find-events)  
updates on facebook@CHBDistrictCouncil

TE RĀ O NGĀ TAMARIKI  
CHILDREN'S DAY

Children's Day is a fabulous fun **FREE** event that is run to celebrate children and support families to have fun together. We have lots of fabulous activities organised and hope to have plenty of families to come and celebrate and enjoy the day with us. Hope to see you there!



*Team* **Cathy Scott**  
Your Country Lifestyle Specialists

Local  
Loyal

*List* **and sell** your property with us  
and upon every successful sale  
we will personally donate **\$500**  
to **Pukehou School\***

If you are thinking of selling your property or purchasing a new one, then call us  
for a free, current appraisal - find out where your home sits in today's market.

*Kim, Cathy & Grace*



**Harcourts** Rural

**Cathy** 027 208 4930 **Grace** 027 360 8231

Regent Realty Ltd Licensed Agent REAA 2008



(06) 856 8169



174 State Highway 2, R.D.1 Otane



office@pukehou.school.nz