



Newsletter

Wisdom begins with Wonder



Term 3, Week 6

Friday 2 Sept 2022

Principal's Message:

Fresh from an amazing day at Rippa yesterday we turn our head to Cross Country next week (🏃). Because of the state of the fields, training has been difficult, however, I'm sure, like they did at Rippa, our tamariki will give it 100%

Along the same lines, it is only a little over one week to the Pukehou Trail Run and Colour Run on Sunday 11th September at Kahotea Farm. This amazing event is a fund raiser for the Pukehou Bus Group. It's a beautiful part of Central Hawke's Bay, and I firmly believe that it can become an iconic event! So, we'd love to see you there, and please spread the word.

As I look across the field towards Te Aute College, I'd like to acknowledge and welcome Rachel Kingi as the new Tumuaki. Having known her for many years, I know she will do an amazing job, and I look forward to Pukehou School and Te Aute College reconnecting and strengthening our relationship. *Kia kaha, Kia māia, Kia manawanui!* Already, it has been fantastic to have a past student, Taamai Graham, along with Matua Conrad Nepe-Apatu support our tama with kapa haka as part of our build-up to Ngati Whai. Our tama have thrived under their guidance.

This term has been challenging with the illnesses that have continued to impact many students, staff and whānau. Resilience has been to the forefront, and given the years of disruption and anxiety that our children (and our whānau) have had to endure, I am constantly amazed by their outlook. *He Moana Pukepuke e Ekengia e te Waka:* A choppy sea can be navigated.

Rob Pratt
Principal



SchoolDocs

Policies and Procedures

At Pukehou School all our policy can be found on the SchoolDocs website. Policies are regularly reviewed and input from our school community is welcomed. Please follow the steps listed:

1. Visit the website
<https://pukehou.schooldocs.co.nz/1893.htm>
2. Enter the username (**pukehou**) and password (**pukehou174**).
3. Follow the link to the relevant policy as listed.
4. Read the policy.
5. Click the Policy Review button at the top right-hand corner of the page.
6. Select the reviewer type.
7. Enter your name (optional).
8. Submit your ratings and comments.

If you don't have internet access, we can provide you with printed copies of the policy and a review form. Simply contact the office.

SUN PROTECTION

One of our policies under review this term is Sun Protection. Currently our policy applies in Terms 1 and 4 from 10am to 4pm. As a Board, we have discussed that given the harshness of the Hawke's Bay sun, expanding this needs to be considered. September to April has been suggested as an option, and we would welcome your thoughts.

A total of \$84 was raised for the Cancer Society on Daffodil Day.
Thank you for your support



(06) 856 8169



174 State Highway 2, R.D.1 Otane



office@pukehou.school.nz



JUICIES \$2 EACH!!

Every Friday lunchtime starting this week, our amazing Year 8 Kaitiaki will be selling Juicies at school. Their goal is to raise funds to purchase some outdoor picnic tables (or seating) that they can leave as a legacy gift for future generations to enjoy.



Photographer: Emily K.



House Points:	Pukeiti	Pukenui	Kauhehei	Kahuranaki
Week 5 - 6	5,780	5,800	7,270	5,600
Term totals to date	17,140	14,970	20,730	16,790

CHB Inter-school tennis starts in Term 4

The season will begin on Monday 17th October, with no games on the 24th October, and then run for approximately another 5 weeks after that. On our first session on Monday the 17th we are going to have a fun session, hand out folders & balls, have a hit around with some coaches present to refine our techniques and play a few games. A little warm up to the season!

Registrations will close on Friday 16th September. Please contact Jacqui before this date if you would like your child to be part of a team.

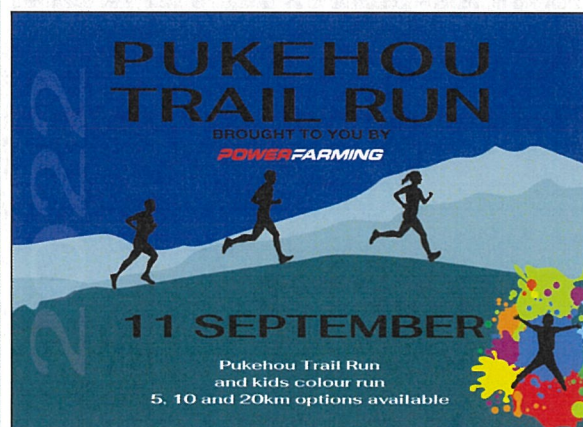
Typically inter-school tennis has been for players 8-13 years old. There are two grades, A and B Grade. 'A Grade' players have generally played a bit of tennis, maybe the odd competition or had some tennis coaching. They have a good understanding of the rules of tennis and are able to have a good rally, play some purposeful shots and can serve well.

A 'B Grade' player may or may not be new to tennis but can hold a rally for more than two shots, they are learning the rules and do not necessarily need to be able to serve properly. Inter-school Tennis is a great opportunity for players to experience tennis in a friendly competitive environment with support and guidance. Playing each week develops their confidence and tennis abilities.

IMPORTANT DATES:

SEPTEMBER

Wed 7	Pukehou / Poukawa Cross Country
Mon 12	Board Meeting 6pm
Wed 14	Cross Country Ppmt date
Thurs 15	CHB Inter School Cross Country
Thurs 22	CHB Cross Country Ppmt date
Sat 24	Working Bee & Shared Lunch
Wed 28	Ngati Whai Festival
Fri 30	Yr 7 Inspiration Day
	End of Term 3



If your child has more than one **Pukehou Sports Top** in their possession, please return any additional ones on Monday. We aim to have all students running Cross Country in tops next week at Poukawa. Thank you.



Tryathlon.co.nz

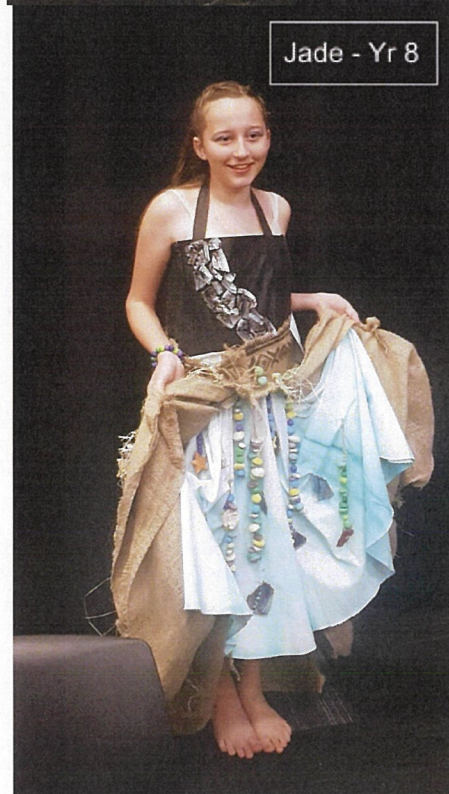
(06) 856 8169

174 State Highway 2, R.D.1 Otane

office@pukehou.school.nz



Yr 6 designers, creators and models



Fashion Art Sport

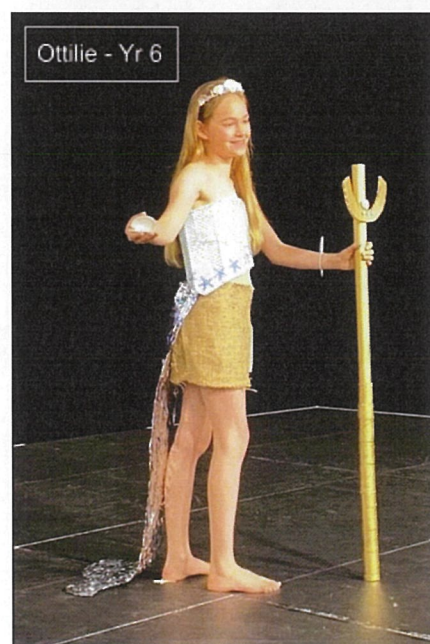
It's all been happening here!

Last week we had the privilege to enter the 2022 Edible Fashion Awards, held in the beautiful Toitoti Opera House in Hastings. There were many very creative and beautiful designs, and the judges said it was the toughest selection they have ever had to

judge.

Thank you very much to Kerin who came to school six times on Thursdays to help us with our designs and creations. Also many thanks to everyone who came and supported us, especially those who drove us there and looked after us for the day. Thank you all, we couldn't have done it without your support. I'm inspired to enter again next year!

Lucy S





The Pukehou Yr 7 & 8 Netball team beat St Josephs 13-9 to win the league last weekend. Great result girls!!

The Yr 5 & 6 team had a great netball season too, despite losing a player to injury a couple of weeks ago.



Chalk Art



Kererū kids dressed as their favourite book characters

Fabulous Invention Maree, it's....

2 easy

three minutes
ease away back pain

Waipukurau
7 Sept 2022
Wed 7 - 8 pm
Venue:
St Andrews CHB,
Porangahau Road.

Free Entry
Rewards for being at
Maree's 1st
Launch

www.comebetterwell.co.nz

Under \$50
Try **PUKE**
Support local
7 sept 7pm

Ease away your back pain
Be first in NZ to buy
Share with friends
Be first to hear Maree's story

Age groups for judging
0-4 5-7 8-10 11-15 16+


Yes adults, you too!

Waipawa Spring Festival 2022

Make a Duck Competition

Bring your imaginative creations to the Lulu and Max stall for display and judging on Saturday the 8th of October. The winners will be decided at 11:00am. There will be prizes for the winner and runner up in each age category.

Lulu and Max



29th & 30th October

Foodscapes Hawke's Bay 2022

Passing the knowledge
for yourself, your family and your neighbours

Tickets on Sale Now
www.springfling.co.nz • tickets and events

Find us on
Facebook: Foodscapes CHB
Instagram: FoodscapesCHB

<https://www.eventfinda.co.nz/2022/foodscapes-passing-the-knowledge/central-hawkes-bay/tickets>

A smorgasbord of events to inspire and encourage
Otane, Central Hawke's Bay



PWF Spring Raffle -

Thank you in advance for your continued support - more tickets are available from the school office. Please sell as many as you can!



CHB JUNIOR TOUCH REGISTRATIONS ARE OPEN!!

Let's get some Pukehou School Teams entered. Junior Touch starts on the 31st of October and runs for five weeks. Games are played from 3.30 - 5.40pm. All teams are mixed. Year 1-2 play on the turf and Years 3-8 at Russell Park.



Register your interest at the office NOW!

ALL STARS PERFORMING ARTS PRESENTS

CHB'S RISING STARS

A SEARCH TO FIND LOCAL TALENT HERE IN CHB!

ADDITIONS: SATURDAY 1ST & SUNDAY 2TH OCTOBER 2022 @ COMMUNITY ROOMS WAIPUKURAU
FINALS NIGHT SHOW: SATURDAY 15TH OCTOBER 2022 6PM @ ST MARTY'S ANGLICAN CHURCH HALL

ENTRIES ARE BOTH GROUPS OR INDIVIDUALS

CATEGORIES: MUSIC, SINGING, DANCING, OPEN

PRIZES FOR ALL SECTIONS! CASH PRIZE FOR THE OVERALL WINNER! \$55

TICKETS FOR FINALS NIGHT SHOW ON SALE THROUGH EVENTINDA

www.allstarschb.com

ALL STARS PERFORMING ARTS CHB

Sent home yesterday:



PWF Spring Raffle sheets



Your Kids Art Works order forms with a 'unique code' for each child

MINIBALL resumes next Friday, 9 September - Friday 9 December.
Same teams as earlier.

Find the draw at <https://websites.mygameday.app/> nearer the time.



(06) 856 8169



174 State Highway 2, R.D.1 Otane



office@pukehou.school.nz