



Newsletter

Wisdom begins with Wonder



Week 9 Term 4 2023

Friday 8 December

Strategic Plan 2024-25

Education and the narrative around it is going through some significant changes, including the NZ curriculum refresh, Mātaiaho, and the Common Practice Model. There is also the new government's pledge to ensure that all schools teach reading, writing, and maths each for a minimum of one hour per day. Most schools already do this so it will be interesting to see how this unfolds. And this week, the headlines have all been about how poorly students are performing as reflected in the recently released 2022 OECD [PISA](#) results. As educators, navigating a constantly changing landscape is challenging.

Bearing this in mind, the Board and our teaching team have been working through our Strategic Plan for 2024-2025, drawing upon the feedback we have received from whānau throughout the year. The one page overview is attached, and as you can see there is not a drastic change of course, rather a refinement as we hone in on what is important for our students, whānau, and community. Underneath this sits a large document that outlines the actions we will take to achieve our goals and initiatives. Please take the time to read through it, and we would welcome any feedback which can be given by email to principal@pukehou.school.nz

One of the more interesting and robust points of discussion was around the Mission statement "to provide an environment that inspires curiosity and creativity so that learning will always be fun." The consensus was that we wanted learning to be more than fun, and in fact some of the best learning occurred in the struggle, in those tough moments to overcome challenges. That's not to say we don't value fun!! Fun is well and truly embedded in what we do here at Pukehou School.

Our reworked mission reads:

To provide an environment that inspires curiosity, creativity, and wonder in our lifelong learners.

End of Year Prizegiving and Celebrations

Next Wednesday is fast approaching! I'm excited and can't wait to celebrate our year and our amazing learners. There will be a complimentary Board Sausage Sizzle prior to the event at 5pm, providing a great opportunity to mingle, chat, and make connections (whanaungatanga). We considered holding the whole event outdoors, but given the changeable weather of late, this was quickly shelved!! We look forward to seeing our school whānau there.

Volunteer Afternoon Tea

We are also bringing back the afternoon tea for invited volunteers (it used to be a morning tea) as a way of thanking those whanau members that volunteer their time to help you throughout the year. Without your help, we couldn't offer the opportunities we do. This will be on Thursday, and invites have been sent home.

IMPORTANT. - Last Day of the Term

Friday the 13th of December is the last day of the term, and this will be a half day finishing at 12.30pm. Please be aware that students will be supervised in the hall with activities to complete rather than in the classroom. This is because we have some building work beginning the following week, and our poor jaded teachers need to organise their classrooms so that the work can start on time. The end result will be great as there will be better access between the classrooms with sliding doors joining all classes, providing more opportunity for collaboration and improving safety.



Also please be aware that on the last Friday of the year Big Bill, the Pukehou School Bus, will NOT be running.

For those in our wider school community that we may not see before school finishes, Meri Kirihimete! We wish you a joyous (but restful) break, surrounded by whānau.



(06) 856 8169



174 State Highway 2, R.D.1 Otane



office@pukehou.school.nz

Tick	End of Year lunch for Thursday 14 December	Prices
	Fish & Chips	\$5.50
	Chips ONLY	\$3.00
	Sausage & Chips	\$4.50
	Tomato sauce	.50c
TOTAL:		
Order by:	9am Tuesday 12 Dec	
Cash or online:	ASB 12-3145-0307680-00	Phone Code: 1493PM

Lunch order form for Thursday 14th December attached.

Please return orders by Tuesday 12th @ 9am, cash preferred.

No late orders can be accepted, thanks.



Account\$:

Thank you to those who keep an eye on your **school accounts in HERO** and ensure they are paid regularly. Please, would everyone make sure you are up to date with payments, or set up automatic payments to continue over the holiday period. That would be ideal, *thank you*. Please contact Jacqui if you would like an account emailed or printed before the end of the term.

Automatic payments are also a painless way to pay for **Bus Fees**. *Something to consider* 🤔.



Summer is upon us, and our latest issue is jam-packed with content to help Kiwi parents <https://issue2312.tottosteens.co.nz/>

What's in this issue for parents?

- » How to slow brain drain over the holidays?
- » Craft: Cutest ever Santa's beard cards

and posters

- » What's on these holidays near you
- » Holiday recipes by foodie Michael Van Elzen
- » Why are our literacy levels waning?
- » Use declarative language to build a stronger connection
- » Free printables for families
- » Puzzle fun for kids

+ EPIC GIVEAWAYS including a holiday activities package

Ask your tamariki to find this issue's Te Reo Māori words including āraī tikākā, rīti, and kōrero.



Meri Kirihimete from all of us at Tots To Teens xx

IMPORTANT DATES:

DECEMBER

- Tues 12** Junior School Trip
- Wed 13** Prize Giving @ 6 pm.
Mingle around the BBQ from 5 pm.
- Thurs 14** Waipawa Fish Supply lunch option
- Fri 15** End of Term. Half day, no bus available.
- Fri 22** Carols at Pukehou Church 7.30 pm

2024

- Tues 30 January** School Re-opens!

LITTLE THEATRE WARDROBE SALE

WHEN
Community Christmas carnival day
Saturday 9 December 2023
10:30pm - 2pm

WHERE
Waipukurau Little Theatre
Side entrance
17 Ruakanuiwa Street

ON SALE - past show clothing, vintage, shabby chic, no dern, coats, jackets, suits, blouses, shirts long dresses, limited furs, gloves, shoes. All sizes

INFO@LITTLE THEATRE.NET.NZ

RUN BY
Theatre committee
Theatre volunteers

PROCEEDS TO
Theatre projects
Future show costs
Wardrobe space!
Volunteer activities



(06) 856 8169



174 State Highway 2, R.D.1 Otane



office@pukehou.school.nz

Pukehou School

Just some of the highlights from 2023



Pukehou School is proud to provide an outstanding education for year 1-8 students. Located halfway between Hastings and Waipukurau, we have a current roll of 80 pupils. The School is at the centre of the Pukehou community, and prides itself on being a genuine rural enviro school.

A few members of the tīma kākāriki - Green Team with Bug Houses which they have given a beautiful new lease of life.

Pets Day - always a highlight!



Our year 8 Mathletics team won in 1st place in the Hawkes Bay Regional maths competition. This was phenomenal result!



All tamariki took part in the Marathon in a Term fundraiser



Teamwork and a willingness to get stuck in and show a 'can-do' attitude was definitely on display throughout the action-packed week the senior class spent in Wellington.



The William Pike Challenge:
Outdoor Activities | Community Service | Passion Projects

"The team managed to hiko up to the top of Te Mata Peak. The views provided perspective and an opportunity to get a sense of our turangawaewae - where we stand. It was awesome to involve the team in a planting project helping restore the ngāhere at such an iconic location." Principal, Rob Pratt



Our whole school production of Ali Baba and the Bongo Bandits gave us much to celebrate! Success does not happen by chance though. Ours was the result of a committed team effort and serious hard work by both students and staff alike. If we think of our vision, **confidence, creativity, and a 'can-do' attitude** were clearly present.

Wisdom begins with wonder



Thumbs Up to the **CHB District Council** for collecting our paper and cardboard for recycling and to **Philippa Wright Wool** in Waipukurau for topping up our supply of fadges to store our paper and cardboard in.

Thank you and Happy Christmas





This Pukehou Cricket Team played at the tournament in Elsthorpe last week. They won three out of the five games they played. Huge thanks to Lee for umpiring and Laura for managing the team on the day.

Please support our fantastic sponsors  PUKEHOU BUS GROUP





















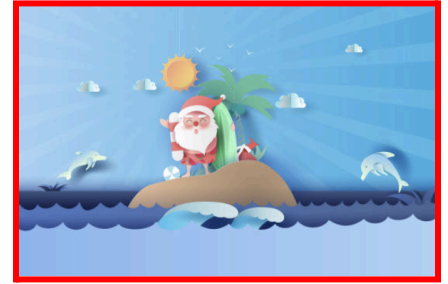



*The Board of Trustees
invite you and your
whanau
to
join us from 5.00 pm
for a sausage
prior to
the final assembly
@ 6.00 pm
on
Wednesday 13th December.*

Children's Carol Service St James Otane

Sunday 10th December @ 10a.m @ St. James Community Church,
Henderson St.

Everyone is welcome! We will provide some kai and drink for the
tamariki.



PWF
pukehou
whanau
+friends

School
Fundraising
Shop
NZ

With Christmas just around the corner, please consider shopping online and help the Pukehou Whanau & Friends (PWF) continue to raise money for all the extras we know our kids love at school.

The School Fundraising Shop is an online shop where you can purchase excellent quality products from businesses such as Moana Road, Camelback, Flox and Sea to Summit. This online platform supports kiwi schools by donating a percentage of each and every order back to a nominated school.

Pukehou School has signed up to be part of this great initiative. All you need to do is Select 'Pukehou School' at the checkout and 10% of your total order is automatically donated to Pukehou School from the Fundraising Shop. It is really easy!!!
The store is full of cool stuff like books, stationary, pet gifts, clothing, sunhats, games, accessories and heaps more so please take a look:

www.schoolfundraisingshop.org.nz

Pukehou Church Carols by Candlelight

Come and join us for a night of Christmas Carols
and readings at Pukehou Church.
Santa will also be making a guest appearance!

Friday 22nd December, 7:30pm. Candles and Supper provided.

This event is free to attend and all are welcome.

BIKING CYCLING CHB Proudly presents the: **BAY MOTOCYCLES**

Tour de Beautiful Central Hawke's Bay

21st January 2024

BAY MOTOCYCLES

Road Race
100km
55km
25km

For more information or to register visit <https://www.cyclingchb.comz/home>

