

William Pike Challenge - CHB Activity Day

Our Year 7-8s attended the CHB activity day last week with other schools from the district. Students were placed in groups with students from different schools to participate in team-building activities and initiatives.

William shared his powerful story with students around 'better never stops' and then teams of students from a variety of schools competed against him in a 4 x 25m relay. William swam all four legs and was leading until the third leg, when Camille put in a powerful burst with his quartet winning the event!

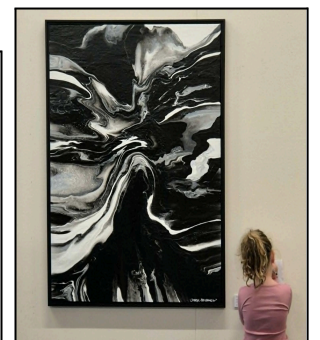
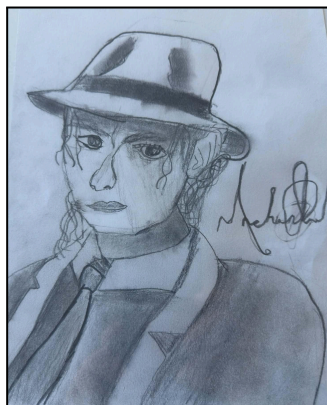


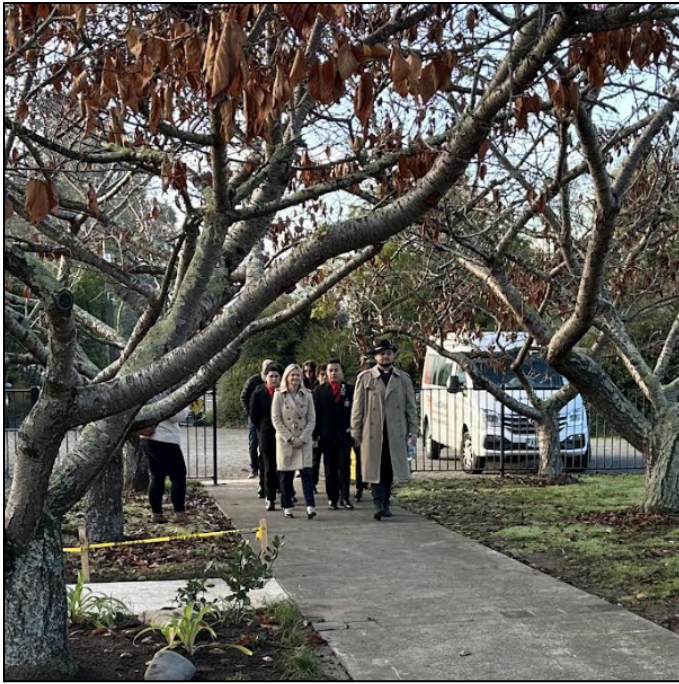
Art Assembly

Our amazing PWF - Pukehou Whānau and Friends - organised the inaugural Art Assembly this past week. Our hall was turned into a gallery, where local artists and our talented students exhibited their work for sale. The evening itself was a huge success and a wonderful occasion and opportunity for mingling and refreshments.

There was a lot of mahi to get to this point, in and out of class. A huge thanks to our creative teaching team for providing the forum and opportunity for our tanariki to express themselves. Also, I'd like to acknowledge Emma Harker for her role in coordinating the exhibition and preparing and presenting our students' art to exhibition standard!

Students also voted on their favourite piece of student art, with Jaxon taking out the People's Choice Award for his sketch of Michael Jackson.





On a cold, frosty Monday morning, Chaplain Zhane blessed the new hall & admin block while the students were singing the school song, on repeat. All the Year seven and eight girls put on a korowai, then the school headed down to the waharoa. We started singing the school song as Chaplain Zhane and the Te Aute boys were walking up to the new office. Chaplain Zhane and the Te Aute boys did a karakia, then Catherine Wedd cut the ribbon. Chaplain Zhane blessed the entire building as he walked through. After they finished walking around, Mrs Strong, Ben Harker, and Catherine Wedd made speeches. The new office block is named Kōtuku J Gilbertson after Jacqui, who has been working at Pukehou School for twenty-eight years.



TE AUTE COLLEGE

Whakatangata Kia Kaha

OPEN DAY

Thursday 25 June 2026
10am - 2pm
100 SHW2 Pukehou



To register:
admin@teaute.school.nz
www.teaute.maori.nz

PRIDE. TRADITION. PURPOSE. RESILIENCE. GROWTH.

Scholastic Book Club Orders close on Thursday 2nd July.

IMPORTANT DATES:

(Check updates on the HERO Calendar)

JUNE

Mon 22 Board Meeting @ 5.30 pm
Thurs 25 Yr 7-8 Technology Day



JULY

Thurs 2 Ngati Whai Festival
Fri 3 End of Term 2
Mon 20 Term 3 commences

ezlunch.

Fresh, Easy Lunches

Delivered to School!

Order at mykindo.co.nz

Each class, sports group and the Bus/Van has a separate messenger group set up for quick communication. Please remember to use the correct page for your messages.

In the mornings, Teachers are busy preparing for the day ahead, often quite early. But just because they are on site does not mean the doors are open for students.

Parents / Caregivers are encouraged to drop students off between 8.30 and 8.45 am, certainly not before the first bus arrives! (8.05 am).

Likewise, in the afternoons we ask that non-bus students are collected by 3.15 pm, unless otherwise arranged.

Thank you for your consideration and cooperation.

Remaining Term 2 Lunch dates:

- Pita Pit** ~ Wednesday 24 June
- Dominos** ~ the final Thursday, 2 July

The [Puketapu Night Run](#) is back, held annually along the limestone trails of the Tūtaekurī River. The event is organised by the Puketapu School Parents League and raises funds directly for Puketapu School.

This year's event is on **Friday 31st July 2026**,

We'd love to have students and staff from your school involved through the **Puketapu Night Run School Challenge**.

School Challenge categories:

- 6km Fun Run - Yr 1-8** - race individually with classmates and teachers. 6:15pm start. Pricing: Yr 0-4 \$15 | Yr 5-13 \$25
- 11km Pacer -Yr 7-13 Solo** -race individually with classmates and teachers. 6:30pm start. Pricing: Student (Yr 7-13) \$30
- 17km -Yr 7-8 and Yr 9-13** -relay team of three or race individually. 6:30pm start. Pricing: Student relay \$25 per person | Student solo (Yr 9-13) \$35
- Battle of the Teachers** -17km relay team. A great way to get staff involved! Pricing: Adult \$35 per person

To enter the School Challenge:

- Register at puketapunightrun.co.nz
- In the entry form, select your school name from the list, or choose 'Other' and type your school name if it's not listed yet
- For relay teams, select or create a team name and link it to your school

Any queries, please contact Mike Courtenay at mike@puketapunightrun.co.nz



WHĀNAU WHĀNUI BINGO NIGHT

FUNDRAISER

CASH PRIZES TO BE WON!!
18 GAMES RAFFLES
\$2 & \$4 CARDS

6 PM - 9 PM
27TH JUNE
OTANE HALL

SAVE THE DATE!

\$20 PLATTERS AVAILABLE VIA PRE ORDER
email: whanauwhanui@otane.school.nz
BYO DRINKS